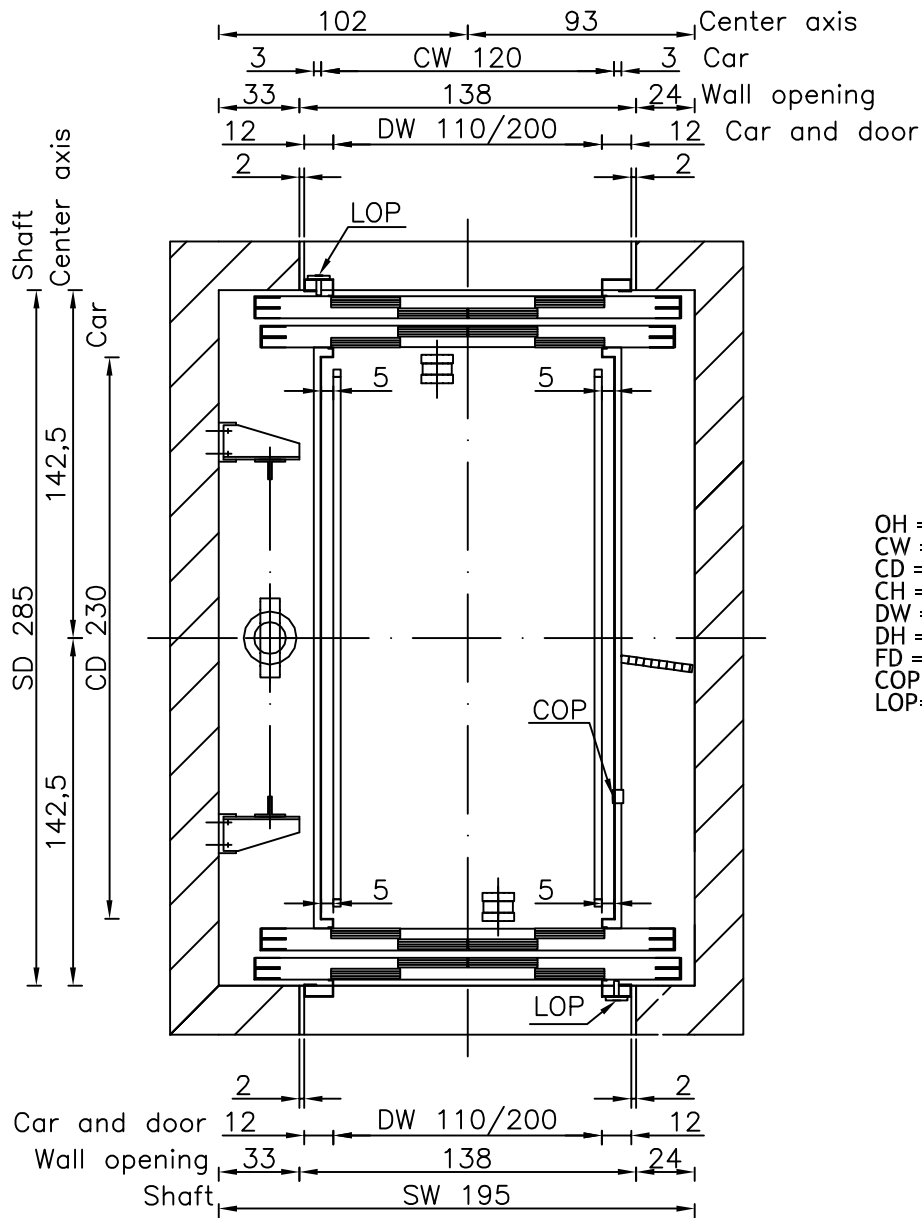
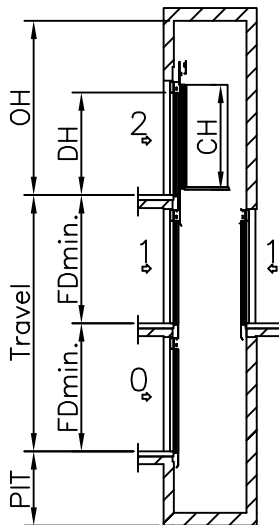


Well

All dimensions may not exceed perpendicular tolerance of ± 2 cm



OH = Overhead
 CW = Car width
 CD = Car depth
 CH = Car height
 DW = Door width
 DH = Door height
 FD = Floor distance
 COP= Car Operating Panel
 LOP= Landing Operating Panel



HYDRAULIC MOTOR-ROOMLESS OPTIONS:

The space saving design cleverly houses the motor in a cabinet that can either be located on or recessed into an adjacent wall.

If space is limited beside the shaft the cabinet can be located up to 10 meters away.

HYDRAULIC MASCHINE ROOM REQUIREMENTS:

Maschine room min. dimension:
 160 x 180

| TYPICAL POWER REQUIREMENTS | |
|----------------------------|---------|
| Motor Power (k.W.) | 18,5 kW |
| Running current | 44 A |
| Starting current | 66 A |

Speed: 0,4 m/s
 PIT: 120 cm
 OH: 330 cm
 CW: 110 cm
 CD: 230 cm
 CH: 210 cm
 FDmin.: 250 (CH+50 cm)

DW: 110 cm
 DH: 200 cm

Type:

INDIRECT 1350 kg TC11-TC11

Drawn By:
 Tomi Irgolič
 Date:
 06.07.2007

SEC

Revision:

Page:

HYDRAULIC

A4
 1:30

00

118

Dimensions in cm.