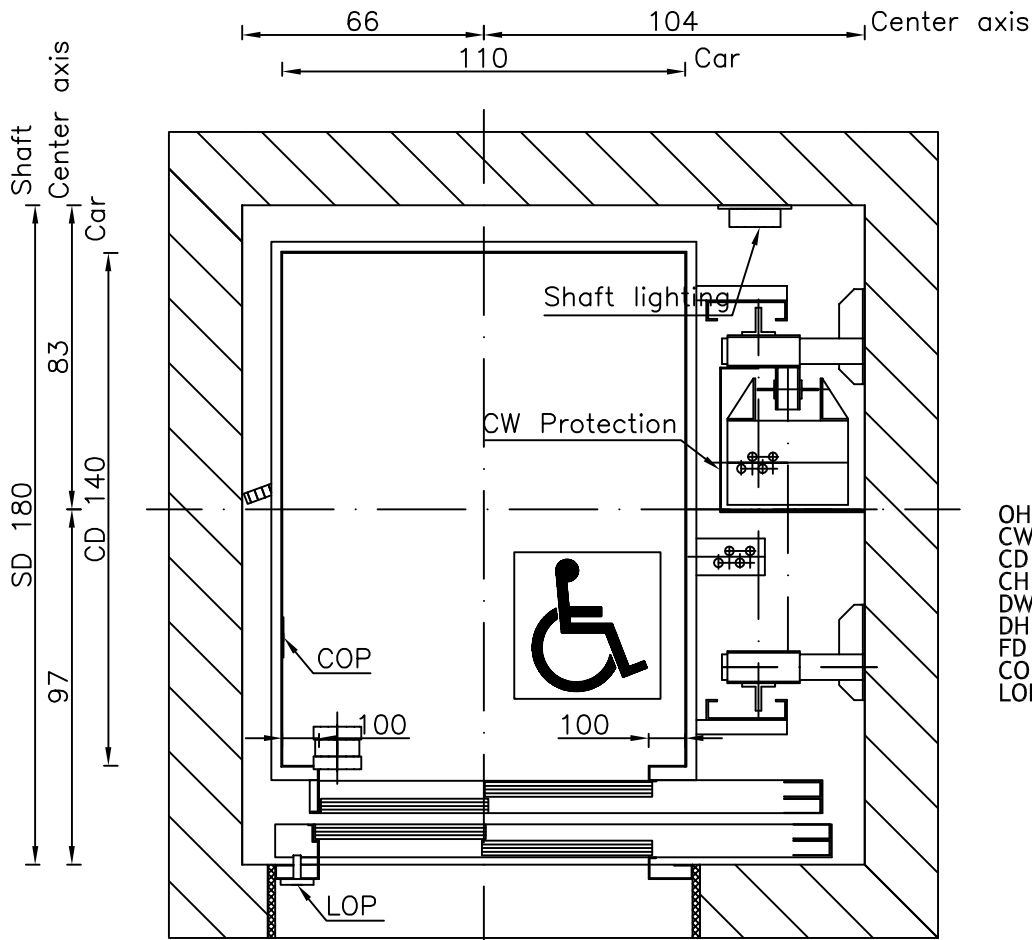
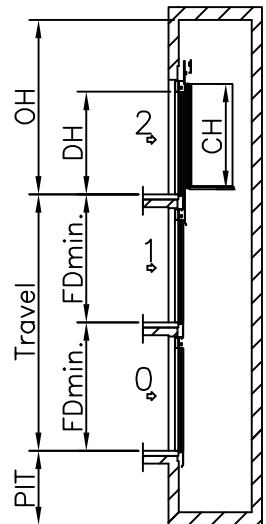
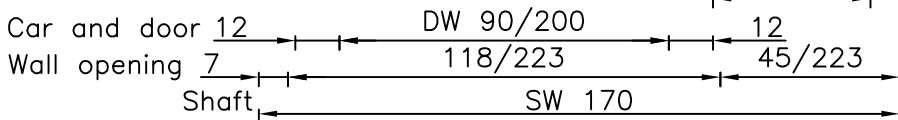
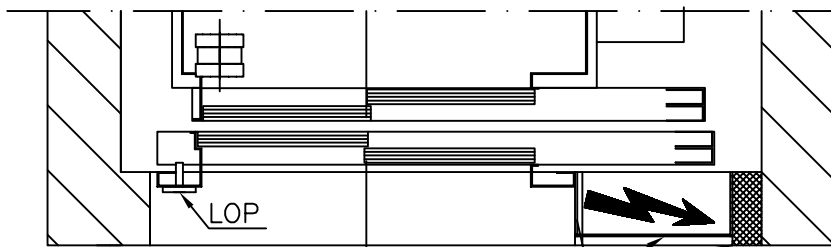
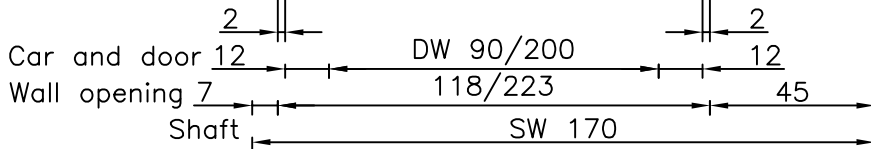


# Well

All dimensions may not exceed perpendicular tolerance of  $\pm 2$  cm



- OH = Overhead
- CW = Car width
- CD = Car depth
- CH = Car height
- DW = Door width
- DH = Door height
- FD = Floor distance
- COP= Car Operating Panel
- LOP= Landing Operating Panel



TYPICAL POWER REQUIREMENTS	
Motor Power (k.W.)	7,3kW
Running current	17,5A
Starting current	25 A
Overload current	32,5A

Speed: 1 m/s	
PIT: 120 cm	
OH: 360 cm	
CW: 110 cm	DW: 90 cm
CD: 140 cm	DH: 200 cm
CH: 210 cm	
FDmin.: 250 (CH+50cm)	

Dimensions in cm.

Type:	GEARED MRL 630 kg TR9		Drawn By: Tomi Irgotič	
			Date: 19.10.2006	
	ELECTRIC	A4 1:20	Revision: 00	Page: 12