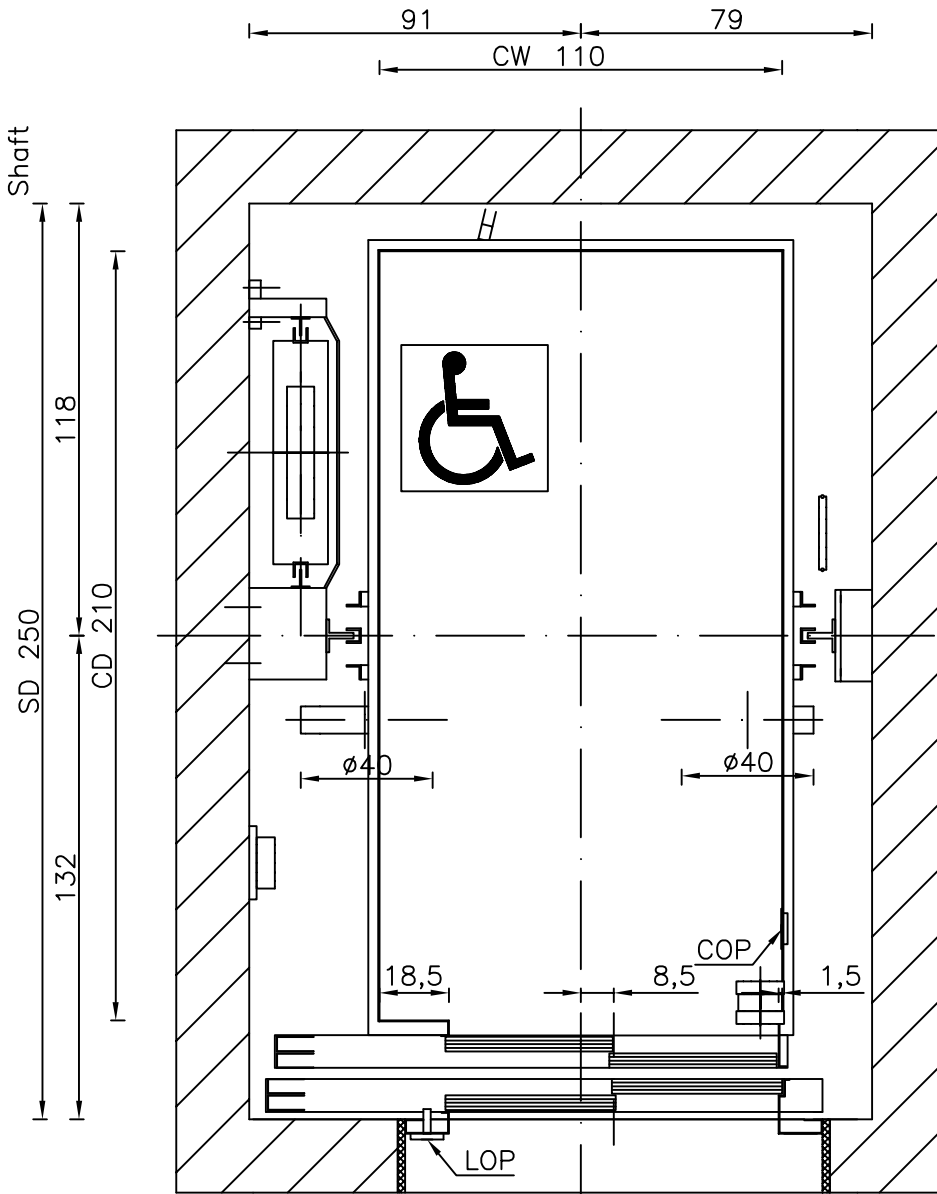
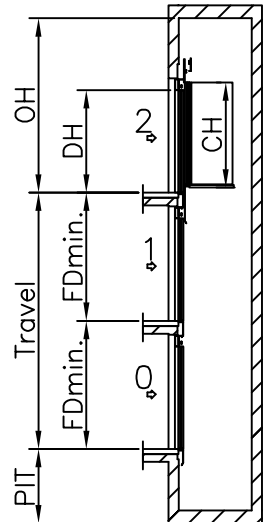
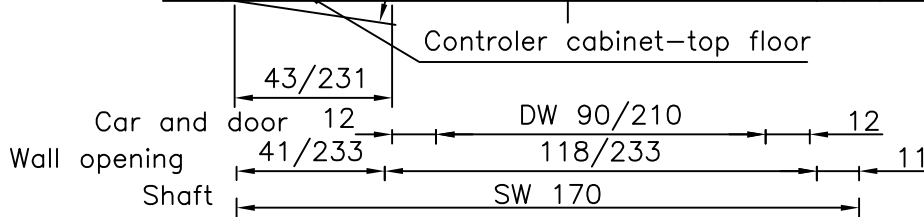
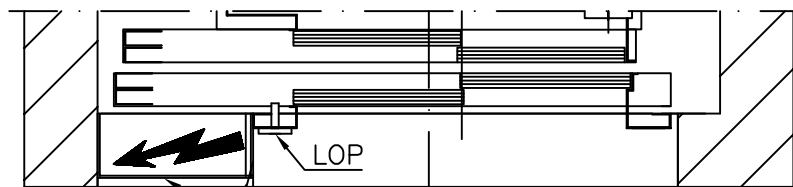
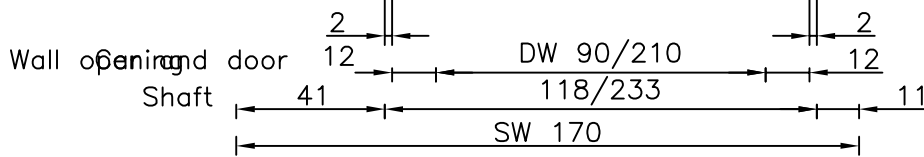


# Well

All dimensions may not exceed perpendicular tolerance of  $\pm 2$  cm



- OH = Overhead
- CW = Car width
- CD = Car depth
- CH = Car height
- DW = Door width
- DH = Door height
- FD = Floor distance
- COP= Car Operating Panel
- LOP= Landing Operating Panel



Speed: 1 m/s	
PIT: 140 cm	
OH: 370 cm	
CW: 110 cm	DW: 90 cm
CD: 210 cm	DH: 210 cm
CH: 220 cm	
FDmin.: 260 (CH+50 cm)	

TYPICAL POWER REQUIREMENTS	
Motor Power (k.W.)	9,2 kW
Running current	21,5 A
Starting current	25,8 A
Overload current	33,5 A

Type:	GEARED MRL 1000 kg TL9		Drawn By: Tomi Irgotič
	ELECTRIC		Date: 19.10.2006
	A4	Revision:	Page:
	1:20	00	15

Dimensions in cm.

