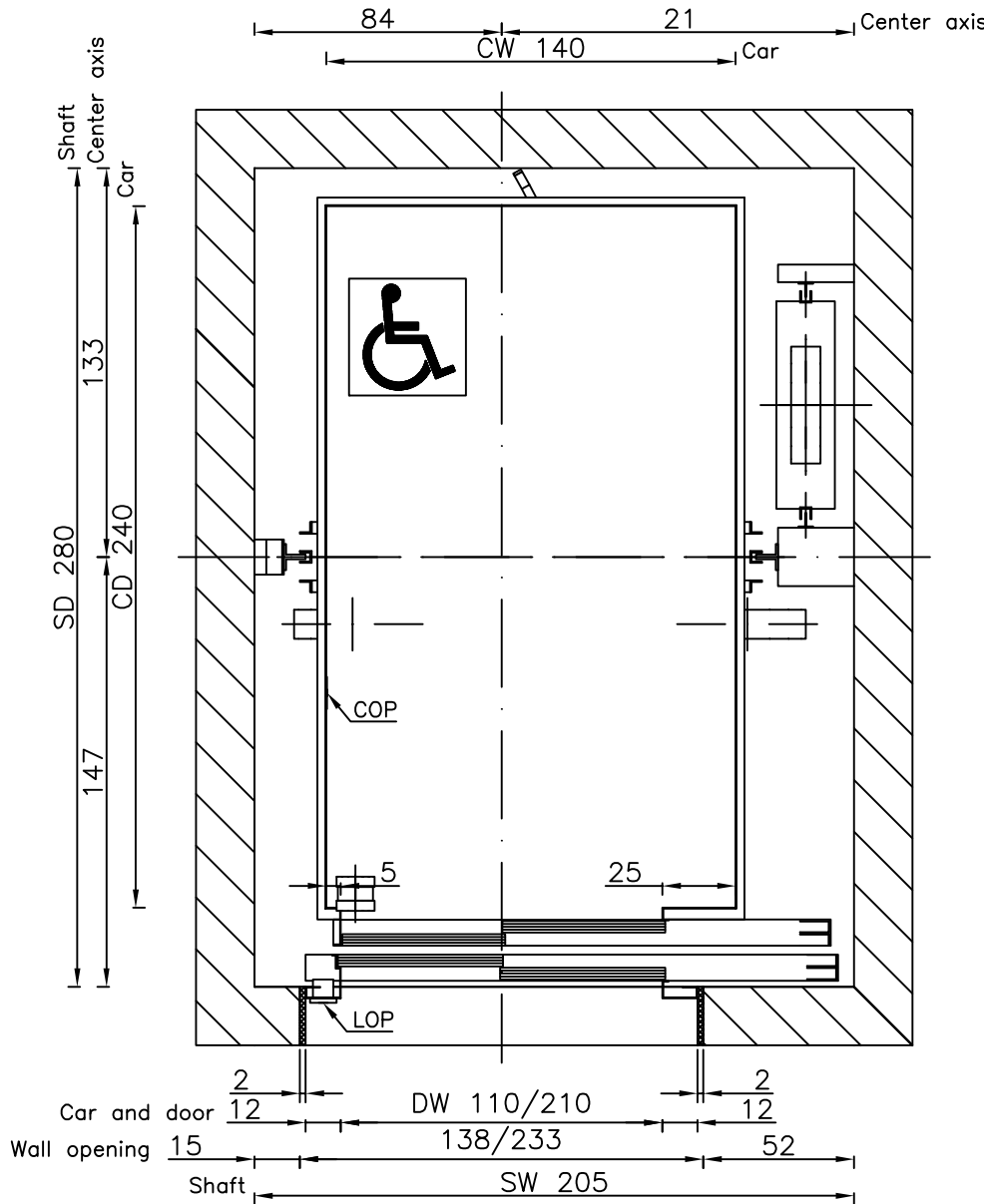
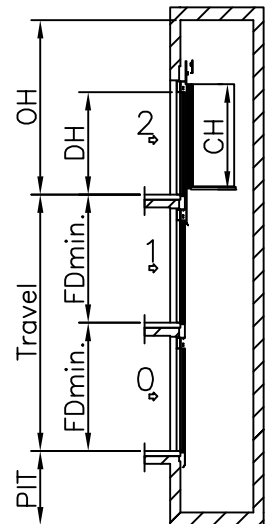


Well

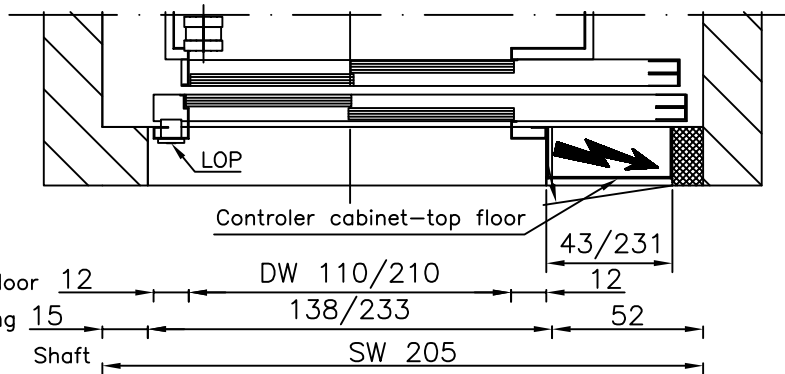
All dimensions may not exceed perpendicular tolerance of ± 2 cm



OH = Overhead
 CW = Car width
 CD = Car depth
 CH = Car height
 DW = Door width
 DH = Door height
 FD = Floor distance
 COP= Car Operating Panel
 LOP= Landing Operating Panel



Speed: 1 m/s	
PIT: 150 cm	
OH: 400 cm	
CW: 140 cm	DW: 110 cm
CD: 240 cm	DH: 210 cm
CH: 220 cm	
FDmin.: 260 (CH+50 cm)	



Dimensions in cm.	TYPICAL POWER REQUIREMENTS		Type: GEARED MRL 1600 kg TR11	Drawn By: Tomi Irgotič	
	Motor Power (k.W.)	13 kW		Date: 19.10.2006	
	Running current	29,6 A	ELECTRIC	Revision: 01	Page: 21
	Starting current	35,5 A		A4	
	Overload current	46,2 A		1:25	