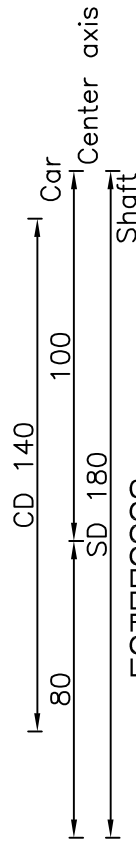
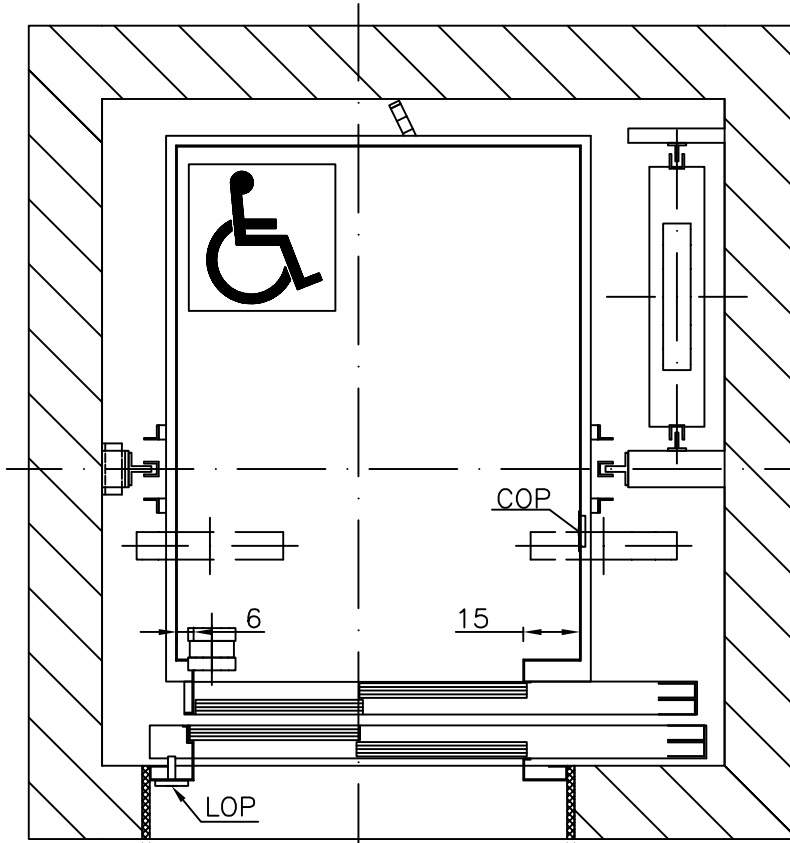
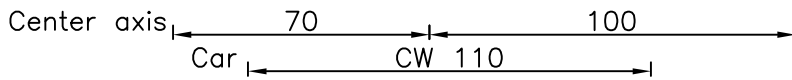
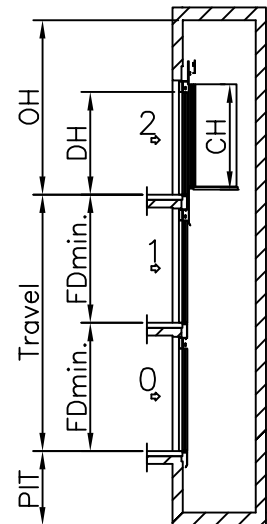
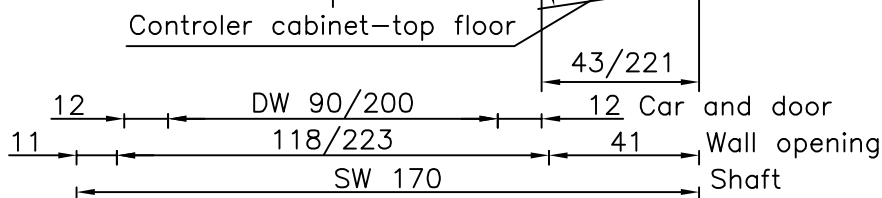
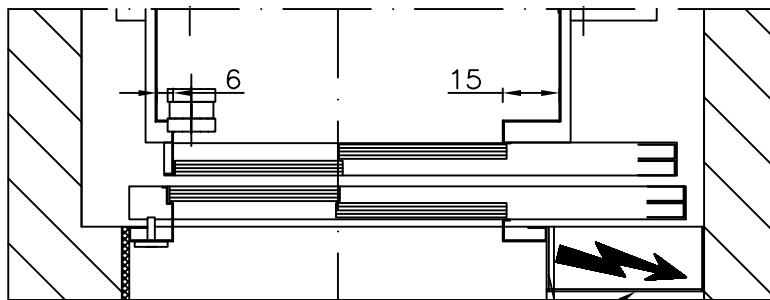
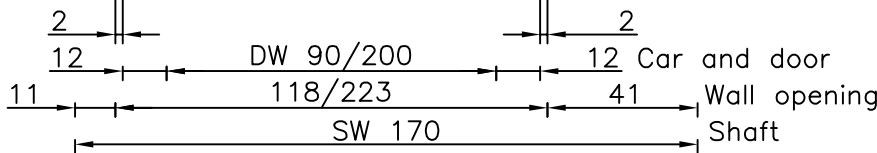


Well

All dimensions may not exceed perpendicular tolerance of ± 2 cm



- OH = Overhead
- CW = Car width
- CD = Car depth
- CH = Car height
- DW = Door width
- DH = Door height
- FD = Floor distance
- COP = Car Operating Panel
- LOP = Landing Operating Panel



Speed: 1 m/s	
PIT: 120 cm	
OH: 360 cm	
CW: 110 cm	DW: 90 cm
CD: 140 cm	DH: 200 cm
CH: 210 cm	
FDmin.: 250 (CH+50 cm)	

TYPICAL POWER REQUIREMENTS	
Motor Power (k.W.)	7,3 kW
Running current	17,5 A
Starting current	25 A
Overload current	32,5 A

Type: GEARED 2:1 630 kg TR9		Drawn By: Tomi Irgolič	
		Date: 02.02.2007	
ELECTRIC	A4	Revision:	Page:
	1:20	01	50

Dimensions in cm.