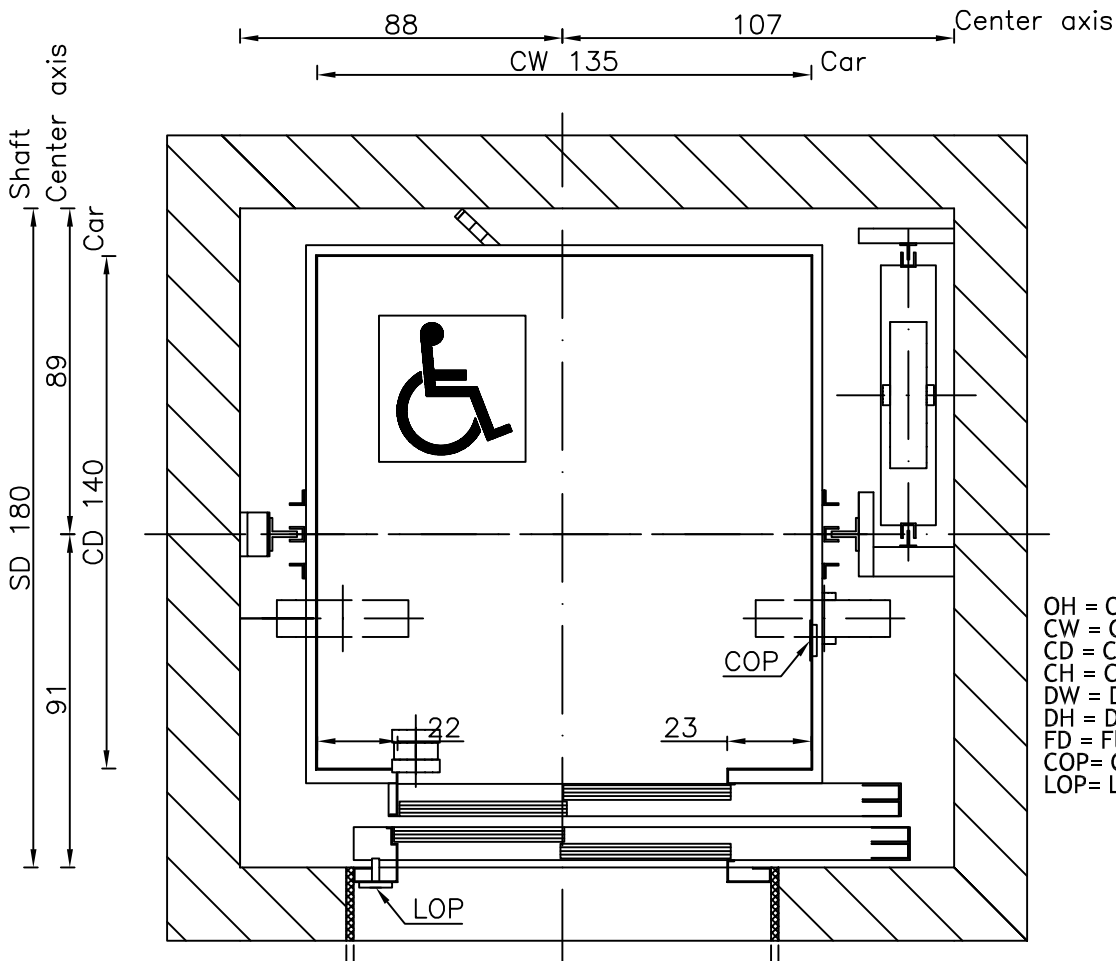
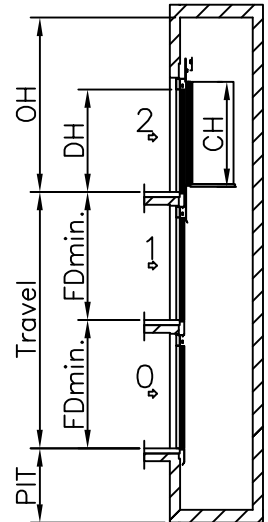
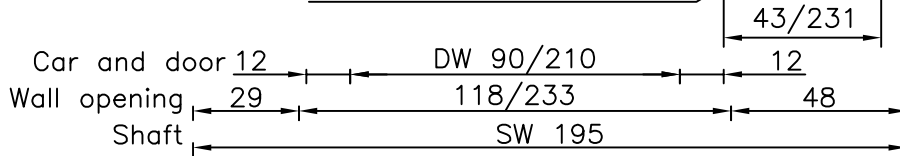
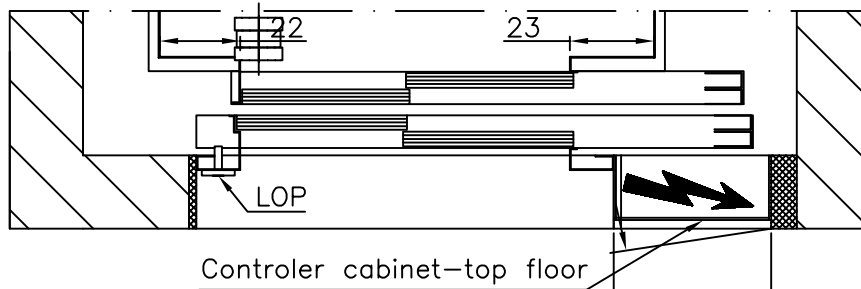
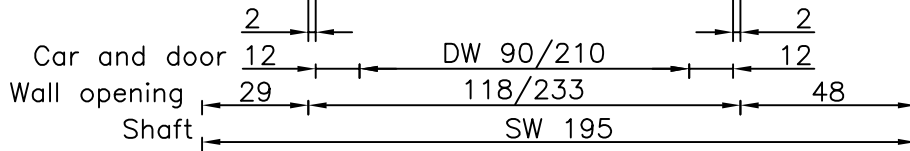


Well

All dimensions may not exceed perpendicular tolerance of ± 2 cm



OH = Overhead
 CW = Car width
 CD = Car depth
 CH = Car height
 DW = Door width
 DH = Door height
 FD = Floor distance
 COP= Car Operating Panel
 LOP= Landing Operating Panel



Speed: 1 m/s	PIT: 140 cm	OH: 370 cm
CW: 135 cm	DW: 90 cm	DH: 210 cm
CD: 140 cm	CH: 220 cm	FDmin.: 260 (CH+50 cm)

Dimensions in cm.

TYPICAL POWER REQUIREMENTS	
Motor Power (k.W.)	4,8 kW
Running current	18 A
Starting current	27 A

Type:	GEARLESS MRL 2:1 800 kg TR9		Drawn By:	Tomi Irgolić	SEEC
	ELECTRIC		Date:		
	A4		Revision:	00	Page:
	1:20				66