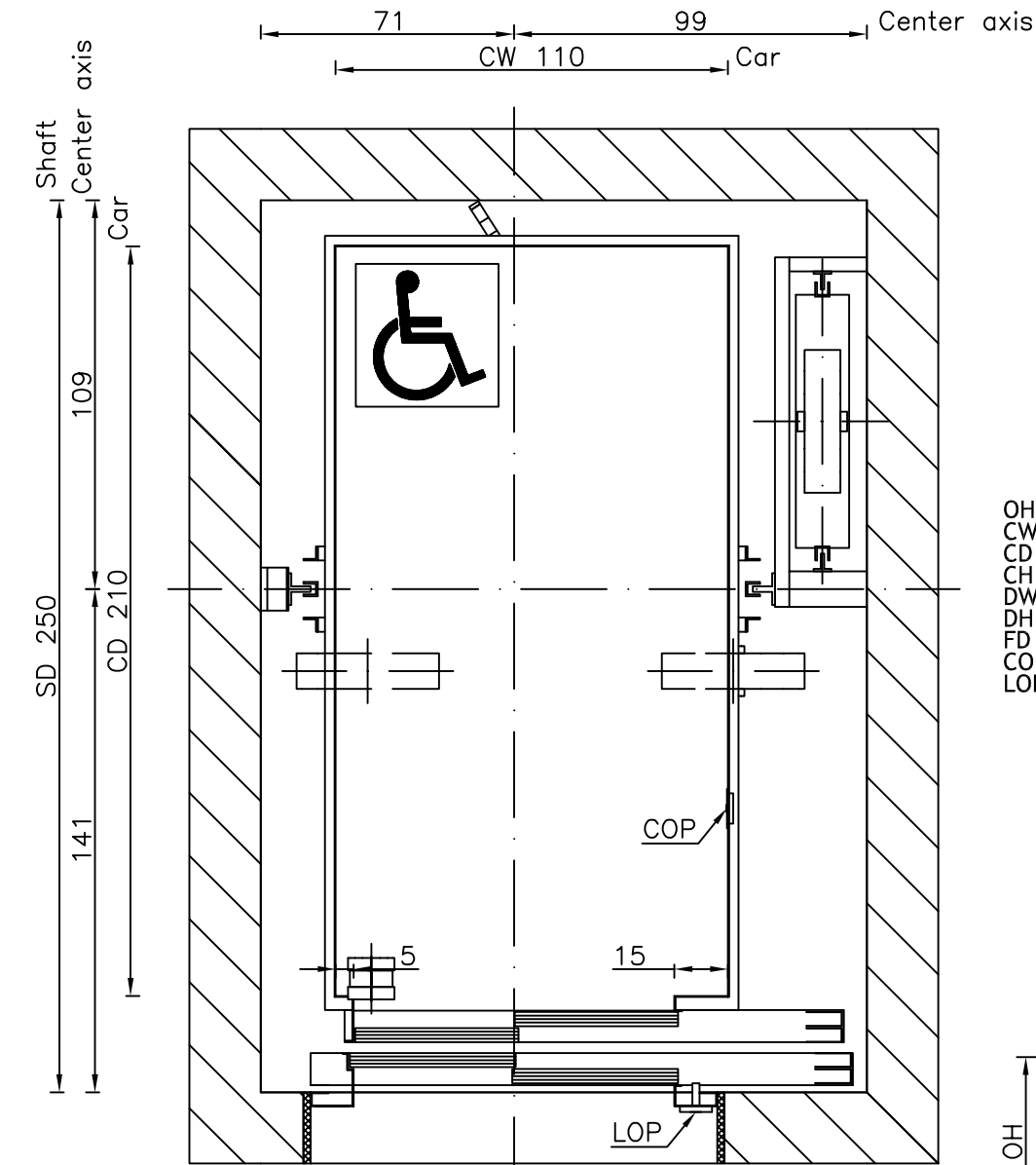
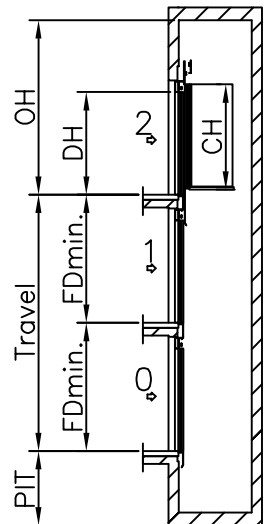
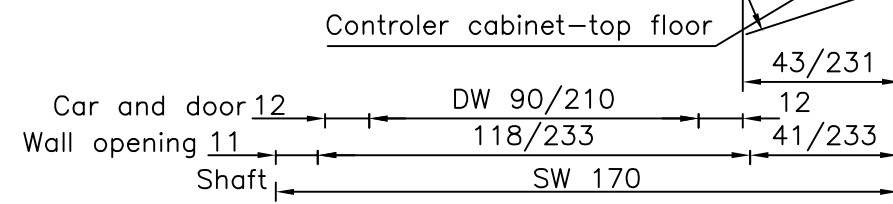
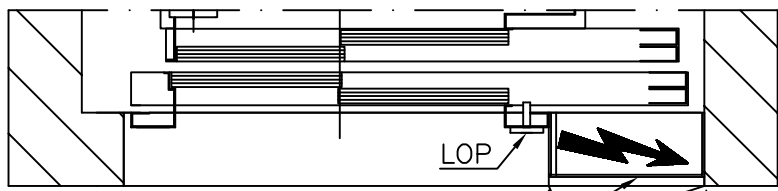
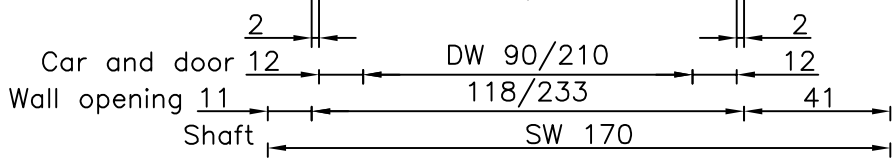


Well

All dimensions may not exceed perpendicular tolerance of ± 2 cm



- OH = Overhead
- CW = Car width
- CD = Car depth
- CH = Car height
- DW = Door width
- DH = Door height
- FD = Floor distance
- COP= Car Operating Panel
- LOP= Landing Operating Panel



Speed: 1 m/s	
PIT: 140 cm	
OH: 370 cm	
CW: 110 cm	DW: 90 cm
CD: 210 cm	DH: 210 cm
CH: 220 cm	
FDmin.: 260 (CH+50 cm)	

Dimensions in cm.

TYPICAL POWER REQUIREMENTS	
Motor Power (k.W.)	6 kW
Running current	21,7 A
Starting current	30,9 A

Type:	GEARLESS MRL 2:1 1000 kg TR9		Drawn By:	Tomir Irgolič		
	ELECTRIC		Date:			16.02.2007
	A4		Revision:			00
	1:20				Page:	68