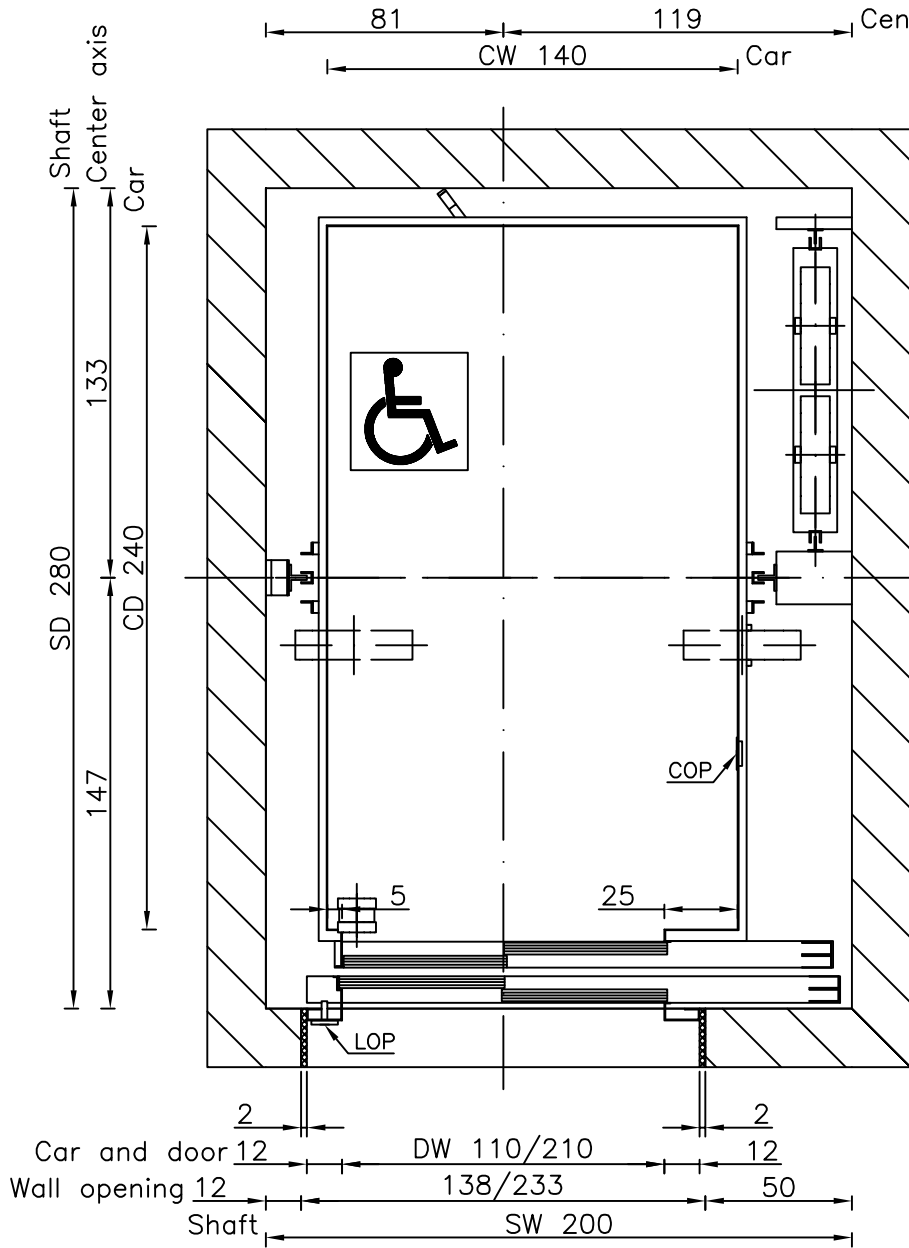
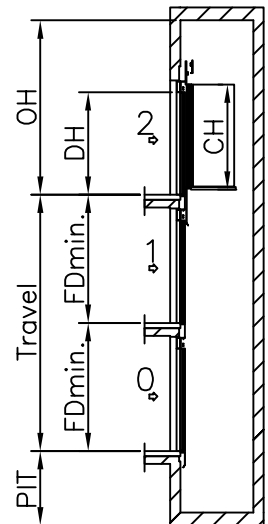
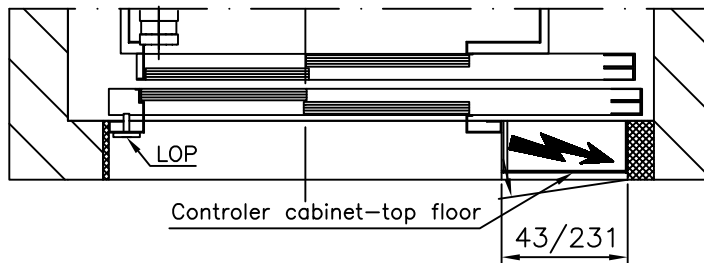


Well

All dimensions may not exceed perpendicular tolerance of ± 2 cm



- OH = Overhead
- CW = Car width
- CD = Car depth
- CH = Car height
- DW = Door width
- DH = Door height
- FD = Floor distance
- COP= Car Operating Panel
- LOP= Landing Operating Panel



Speed: 1 m/s	
PIT: 150 cm	
OH: 400 cm	
CW: 140 cm	DW: 110 cm
CD: 240 cm	DH: 210 cm
CH: 220 cm	
FDmin.: 260 (CH+50 cm)	

Dimensions in cm.

TYPICAL POWER REQUIREMENTS	
Motor Power (k.W.)	9,6 kW
Running current	34,8 A
Starting current	57 A

Type:	GEARLESS MRL 1600 kg TR11		Drawn By: Tomi Irgotič	
			Date: 19.10.2006	
	ELECTRIC		Revision:	Page:
			A4	
			1:25	00
				78