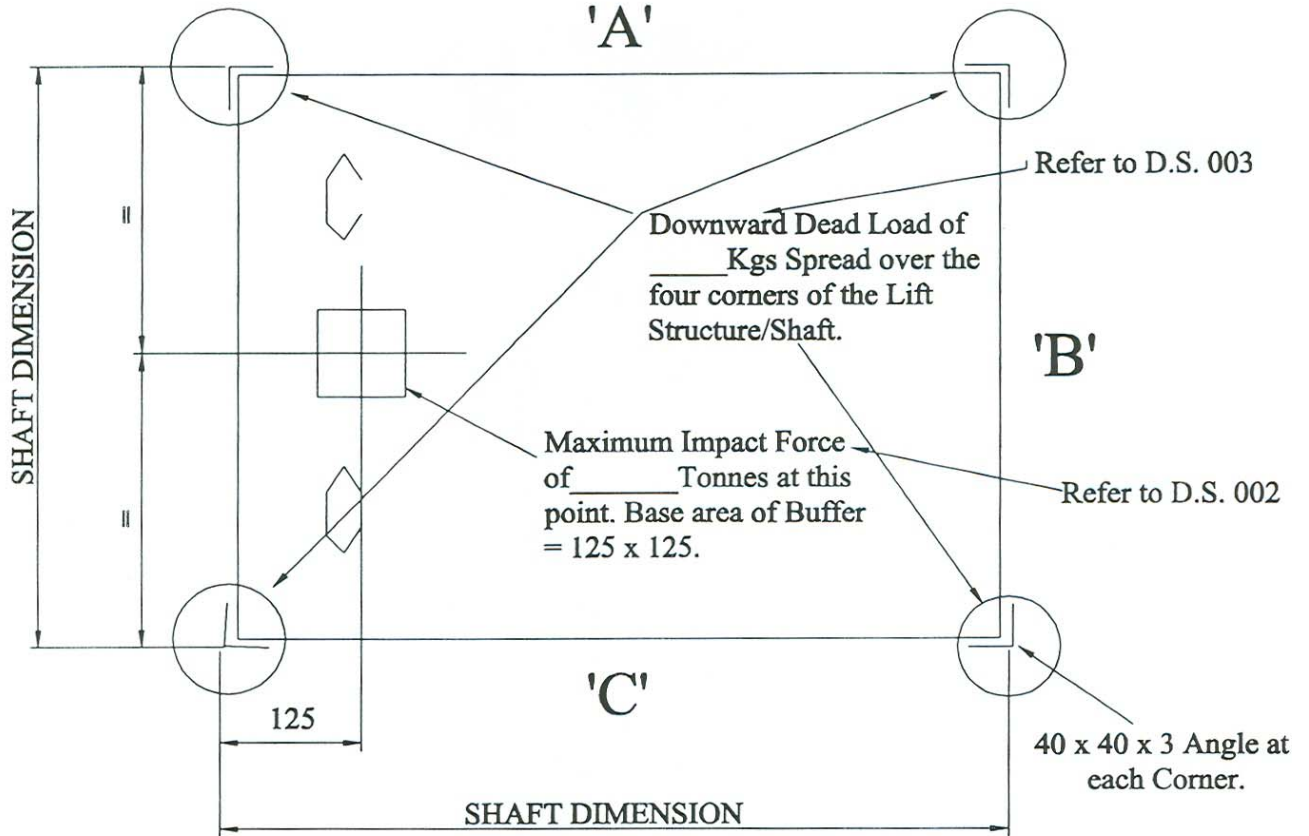


DATA SHEET

Job No _____
 Site _____


Model: _____



Downward Dead Load is Calculated as follows: The weight of the Equipment + Load x 2.

Impact Loading is Calculated as follows: Mass x Gravity x Travel Distance + Slowing Distance + 10.

Impact Point Position is Related to Door Position and Must be checked.

| | | |
|---|---|---|
| Title: Microlift Downward Dead Load and Impact Points | Data Sheet No: <h2 style="text-align: center;">DS. 0009</h2> |  |
| Stannah Microlifts Ltd Caxton Close, East Portway Andover, Hants SP10 3QN | Date: April 2000 | |
| Fax: 01264 333465 Tel: 01264 351922 | Issue No: 1 | |